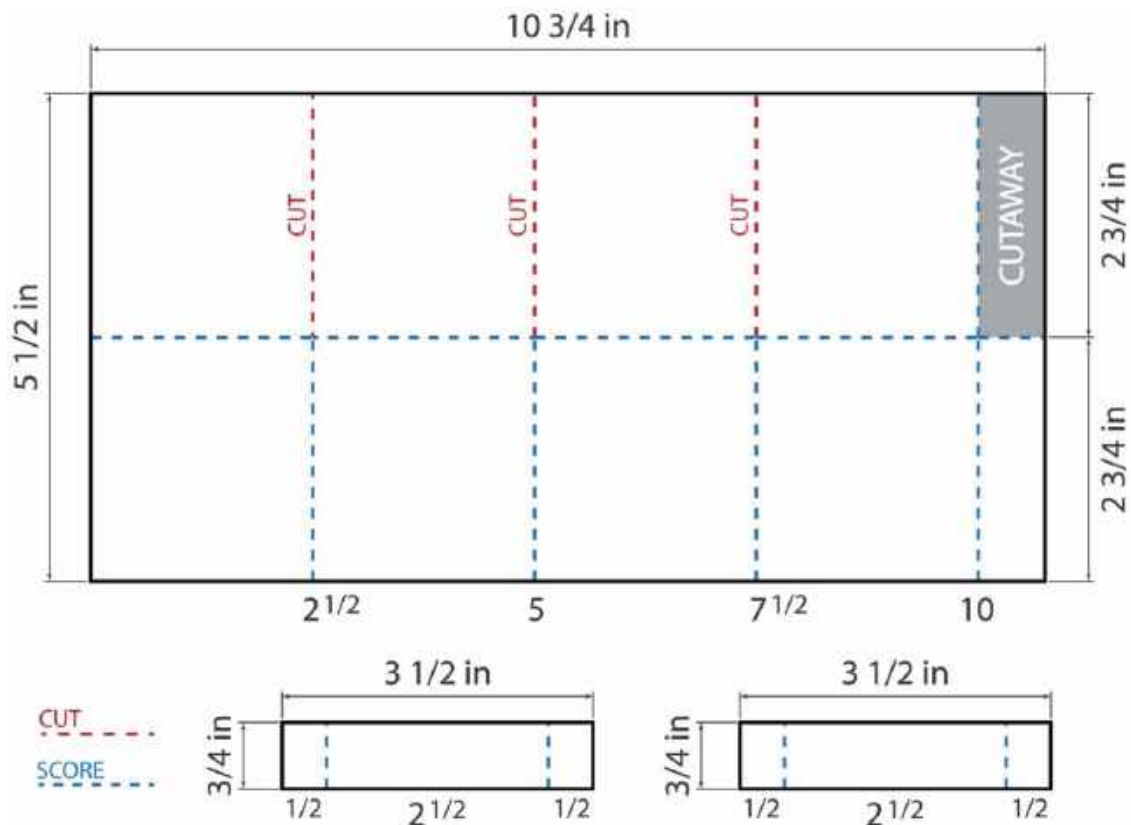




Pop Up Box Card

Fold down flat!



1. Score at 2 ½, 5, 7 ½, and 10 inches. Turn the paper 90 degrees and score at 2 ¾”.
2. Cut away one of the small rectangular sections. The remaining tab is a glue tab.
3. Cut from the top of the card down to the horizontal score line, along the score lines.
4. Fold the glue tab into the card. Add tape. Now fold the card in half, adhering the glue tab to section A. When you open it up, you should have a box shape.
5. Fold down three of the upper sections, leaving one uncreased for the back of the card.
6. Prepare the 3 ½ x ¾” pieces as shown. Fold along the score lines. Add a glue dot to each of the four small sections, and adhere inside the “box”, creating bridges.
7. Embellish as desired.

See this fold in action at www.youtube.com/stamphappynz and search for “pop up box card”.